

Gennemsnitligt gebyr
pr. emballage **reduceret**
med 58%

An infographic within a circular frame. The top half has a light blue background with white clouds. The bottom half has a green background. Two plastic bottles are shown: a blue one on the left and an orange one on the right. The blue bottle has the text '93% etablerede' on it, and the orange bottle has '91% nye'. Below the bottles, the text 'Returprocent for etablerede og nye produkttyper' is written in white.

93%
etablerede

91%
nye

Returprocent
for etablerede og
nye produkttyper



91%
returprocent
for nye produkttyper

The graphic features a light blue circular background with three green arrows forming a clockwise cycle. In the center, there are stylized icons of a brown cardboard box, a yellow plastic bottle, and a red plastic bottle. The text is positioned in the upper half of the circle, with '91%' in a large, bold font, followed by 'returprocent' in a slightly smaller bold font, and 'for nye produkttyper' in a regular font below it.



96%



91%

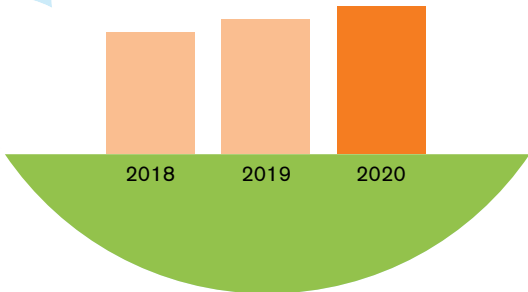


94%

Returprocent for etab-
lerede emballagetyper
– **samlet 93%**

2,4 mia.

kroner i omsætning
inkl. pant



434

fuldtidsmedarbejdere



33%

genan-
vendelige
materialer

**Samlet
indtægt**

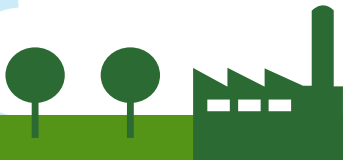
andre
indtægter

67%

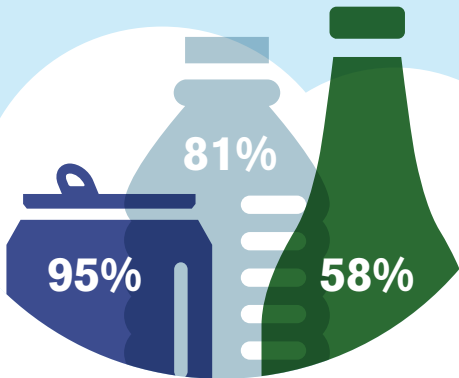


**178.000 tons
CO₂ sparet**

ved genanvendelse af 1,7 mia.
emballager i 2020



Sparet CO₂ ved genanvendelse



2014

2020

39%
mindre CO₂

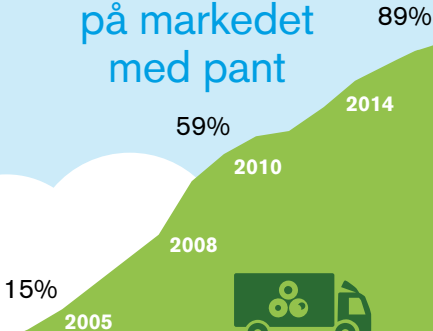
udledt pr. emballage ved
håndtering gennem
pantsystemet



15.957

butikker, kontorer og
restauranter er tilmeldt
systemet

Andel af engangsemballage på markedet med pant





Mere end

9 ud af 10

flasker og dåser
kommer retur

A circular infographic with a light blue upper half and a green lower half. The green half features a stylized recycling symbol consisting of two curved arrows forming a circle, with four small dots below it. The text is centered in the upper half.

39.330

registrerede dåser og
flasker med pant og
6.788 nye produkter
på markedet i 2020



1.380

tilmeldte producenter
og importører, heraf
133 nye i 2020



95%

CO₂ sparet ved
at genanvende
en dåse



81%

CO₂ sparet ved
at genanvende
en plastflaske

An infographic featuring a dark green silhouette of a glass bottle centered within a circular frame. The background is split into light blue and white sections. The text '58%' is prominently displayed in white on the bottle's body, with the text 'CO2 sparet ved at genanvende en glasflaske' written below it in a smaller white font.

58%

CO₂ sparet ved
at genanvende
en glasflaske

A circular infographic with a light blue background. At the top, the text '99,9%' is written in a large, bold, dark green font. Below this, a grey can with a handle is shown. The text 'Genanvendelsesprocent for dåser' is written in a dark green font across the front of the can. Two thick, curved green arrows form a circle around the can, pointing clockwise, indicating a recycling process.

99,9%

Genanvendelses-
procent for
dåser

An infographic featuring a stylized grey plastic bottle with a white cap, centered within a circular frame. The background is a light blue circle with a white wave-like pattern at the bottom. A thick green arrow curves clockwise around the bottle. The text '70%' is prominently displayed at the top, and 'Genanvendelsesprocent for plastflasker' is written in green below the bottle.

70%

Genanvendelses-
procent for
plastflasker



100%

Genanvendelses-
procent for
glasflasker

2014

2020

39%
less CO₂

discharged for each
collected one-way
packaging